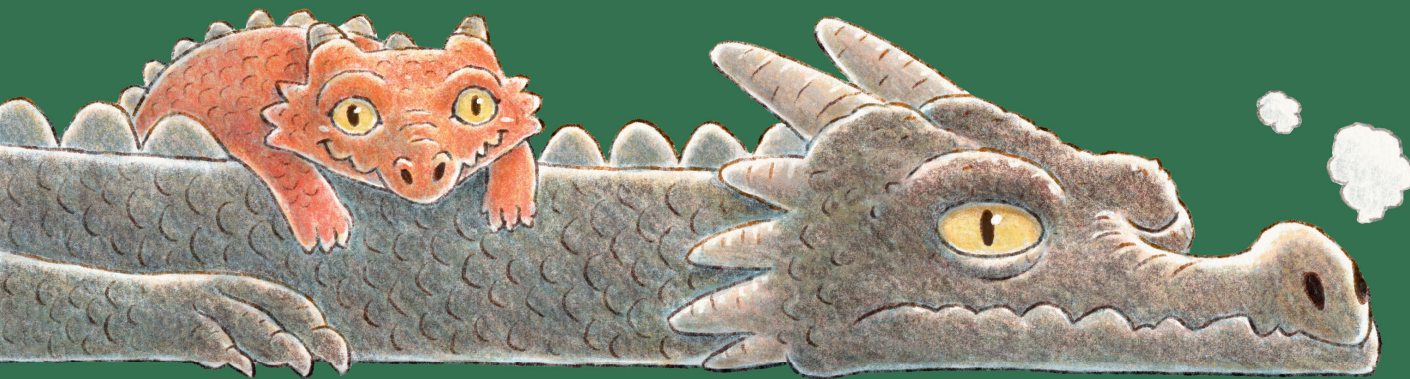


Evelyn Witch Gets a Pet



Activity Kit



ABOUT THE BOOK: An adorable witch is anxious to get the perfect pet but learns to have patience when she brings home a mystery egg in this laugh-out-loud picture book written by *New York Times* bestselling author Beth Ferry and illustrated by Charles Santoso.

Evelyn Witch has everything a witch needs. Messy hair, bubbling potions, and perfectly carved pumpkins.

But there's something missing ... A pet!

Perhaps she'll get a bat or a griffin, or— Oh. She can only afford the mystery pet: a plain white egg.

She watches and waits for it to hatch.

Sniveling snails, something has to be done! Evelyn rolls up her sleeves and heads to the library, where they keep all the best spells. It's time to get serious.

ABOUT THE AUTHOR: **Beth Ferry** is the *New York Times* bestselling author of *Stick and Stone*, illustrated by Tom Lichtenheld, and many other books. She has enjoyed the company of some wonderful pets in her lifetime, including a hedgehog, a blue-tongued skink, a Pacman frog, a lionfish, a seahorse, a snowflake eel, an apricot milk snake, a Flemish Giant rabbit, three adorable bulldogs, and myriad guinea pigs and hamsters. Sniveling snails, that's a lot of pets! Beth lives by the beach in New Jersey where she finds inspiration for her picture books in the salty air.

ABOUT THE ILLUSTRATOR: **Charles Santoso** loves drawing little things in his little journal and dreams about funny, wondrous stories. He is the creator of Happy Hippo and has illustrated many books, including *Ida*, *Always*, and the *New York Times* bestselling *Wishtree* and *Odder* books by Katherine Applegate. He moves around between different countries to live and work but calls Sydney, Australia, home.



Magical Pet Quiz

Which magical pet is right for you?

Take this quiz to find out what kind of magical creature will hatch for you.

1. What do you want most in a pet?
 - a. Something fast and fun
 - b. Something loyal and loving
 - c. Something mysterious and magical
 - d. Something snuggly and sleepy
2. What is your pet's name?
 - a. Rumblebelly
 - b. Shadow
 - c. Zippy
 - d. Cuddletooth
3. What does your pet eat?
 - a. Lightning bolts and marshmallows
 - b. Moonberries and kindness
 - c. Shadows and star sparkles
 - d. Pancakes and purrs
4. Where does your pet sleep?
 - a. On top of the roof
 - b. Curled up beside you
 - c. In a glowing orb
 - d. In a cozy basket by the fire
5. What sound does your pet make?
 - a. "Yip yip!"
 - b. "Shriek!"
 - c. "Snorfle!"
 - d. "Mrrow!"



ANSWER KEY:
Mostly A's? You'd love a baby dragon! Full of energy and ready to play!
Mostly B's? A loyal bat buddy is your perfect match. They love books and late-night flights!
Mostly C's? You're destined for a mystery egg. Who knows what will hatch?
Mostly D's? A fluffball cloud kitten is calling your name. Sweet dreams await!



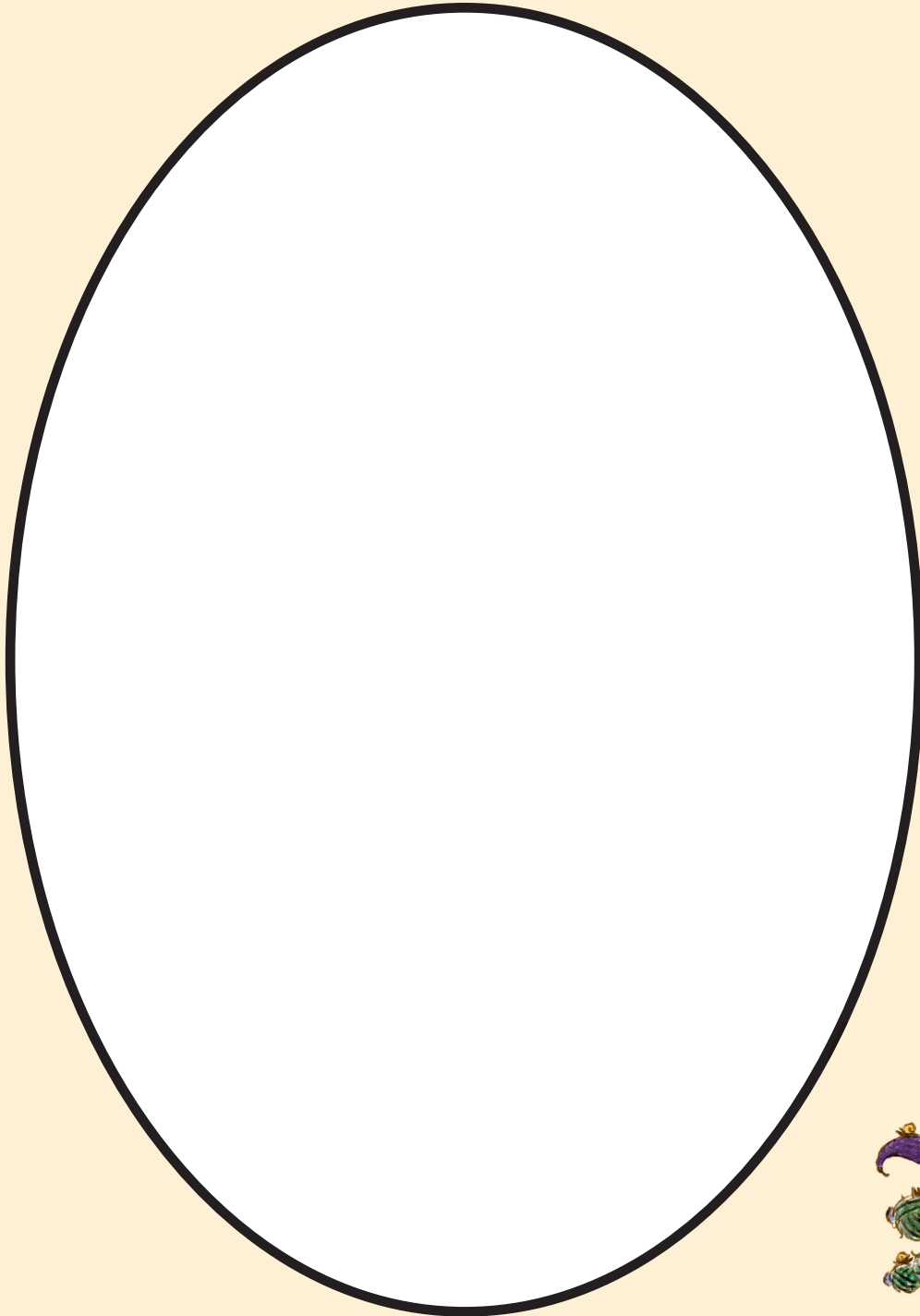
Draw A Mystery Egg

What does your mystery egg look like?

Evelyn had to be VERY patient before her mystery egg hatched into an owl.

Use the space below to design your own mystery egg.

What colors, patterns, or spells does it have on it?



Word Search

Find the magic words!

Evelyn visits the library to find spells for hatching her egg.

Can you help her find all the words she's read about?



| | | | | | | | | | | | | | | | | | |
|---|---|---|---|---|---|---|---|---|---|---|---|---|---|---|---|---|---|
| V | S | C | B | U | D | O | F | A | Y | V | D | G | N | O | O | B | U |
| K | J | T | R | F | Q | P | J | M | T | L | W | R | N | B | Q | F | T |
| L | W | U | T | D | E | U | U | L | B | A | M | E | A | P | R | C | Z |
| P | O | I | V | J | S | M | P | R | P | R | E | Y | F | G | S | K | E |
| G | A | F | T | U | M | P | Q | L | W | O | O | O | S | J | O | V | G |
| L | V | T | H | C | Z | K | S | N | Z | B | T | O | Z | T | E | N | G |
| K | Z | D | I | L | H | I | P | L | P | Z | X | I | M | L | E | B | T |
| L | Z | B | Q | E | U | N | O | S | I | E | I | I | O | W | W | R | N |
| V | U | Q | K | N | N | Z | Y | M | K | W | T | V | V | N | H | G | Y |
| M | M | R | P | D | J | C | N | B | Z | S | F | Z | U | G | U | D | R |
| J | G | S | T | R | E | D | E | N | J | M | B | T | J | B | E | M | K |
| W | Z | W | O | E | G | R | I | F | F | I | N | T | J | E | S | D | R |

WITCH
POTION
BROOM
PUMPKIN
MYSTERY

PET
EGG
PATIENCE
GRIFFIN
DRAGON



SCIENCE FUN!

Which animals hatch from eggs?

Animals that hatch from eggs are called OVIPAROUS. Oviparous means egg-laying. Birds are the only animal family where ALL members lay eggs. But lots of other animals lay eggs too, including: reptiles, insects, amphibians, arachnids, crustaceans, fish and two species of mammals. Mammals who lay eggs are called MONOTREMES.

See how many oviparous creatures you know.

Circle the creatures who hatch from eggs (even the mythical ones)

| | | |
|-----------------|------------|-----------|
| Bat | Crab | Crocodile |
| Dog | Dragon | Echidna |
| Emu | Flamingo | Frog |
| Flying Squirrel | Fox | Leming |
| Lizard | Mermaid | Narwhal |
| Otter | Penguin | Platypus |
| Porcupine | Salamander | Seahorse |
| Snake | Turtle | Unicorn |
| Whale | | |

Answer Key: Crab, Crocodile, Dragon, Echidna (mammal), Emu, Flamingo, Frog, Lizard, Penguin, Platypus (mammal), Salamander, Seahorse, Snake, Turtle

